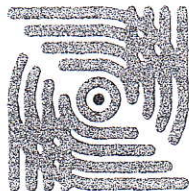


**A.N.C.I. Servizi S.r.l.**

Sede legale e amministrativa  
20149 MILANO  
Via Monte Rosa, 21  
Tel. 02.438291  
Fax 02.48095833  
E-mail: [progettispeciali@anci-calzature.com](mailto:progettispeciali@anci-calzature.com)  
Cap. Soc.: € 10.400 i.v.  
C.F./P.I.: 07199040150  
Reg. Imprese n° 229059  
Trib. di Milano  
R.E.A. n° 1147818



**CIMAC** Centro Italiano  
Materiali di Applicazione  
Calzaturiera

Sede operativa  
C.so G. Brodolini, 19 - 27029 VIGEVANO (PV) - Tel. 0381.84722 - Fax 0381.73393  
E-mail: [ce@cimacpv.it](mailto:ce@cimacpv.it) - Internet: <http://www.cimacpv.it>

According to the EEC instructions 89/686 dated 21<sup>st</sup> of December 1989, concerning the standardisation of legislation of all member countries with regard to individual protection systems and the relative legislative decree dated 4<sup>th</sup> of December 1992, N° 475,

**A.N.C.I. servizi s.r.l. - C.I.M.A.C. section**  
**CENTRO ITALIANO MATERIALI DI APPLICAZIONE CALZATURIERA**  
Authorized with the decree issued by the Ministry of Industry of the Italian Republic  
on the 11<sup>th</sup> of October 2000 - Community Identification N° 0465

grants:

## **EC TYPE-EXAMINATION CERTIFICATE** **N° 0161/17147/10**

for the following model of personal protective equipment:

**Clog - art. "F-S.FU"**

Manufacturer (see notes):

**SC BALDO S.R.L.**

**STR. FOSTULUI**  
**517679 SINTIMBRU JUD ALBA**  
**ROMANIA**

Vigevano, 4<sup>th</sup> October 2010

Technical Manager of the Centre  
Ing. Giuseppe Bellotti





## 1. Description of personal protective equipment:

PPE Category: second category

Type of PPE: occupational footwear for professional use according to EN ISO 20347:2004+A1:2007 standard

Design: Clog

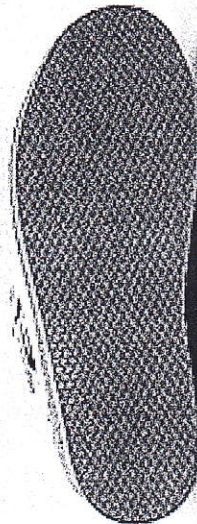
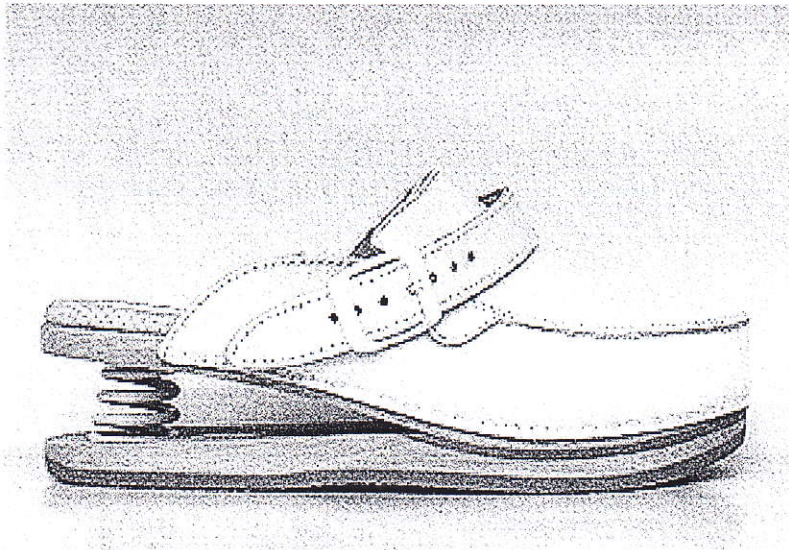
Classification: I - Footwear made from leather and other materials, excluding all-rubber or all-polymeric footwear

Size range: from 35 to 46 (French size)

Identification of last: FL

Manufacturing process: Stitched with nails (with glued outsole)

The footwear has a non-removable insock





**2. The tests and the examinations to verify the conformity of the article (in compliance with art. 10 of Directive 89/686/CEE) are performed applying the following harmonized standards and the Regulation 190/2006/CE Annex XVII:**

- EN ISO 20344:2004+A1:2007 – Personal protective equipment – Test methods for footwear.
- EN ISO 20347:2004+A1:2007 – Personal protective equipment – Occupational footwear.

**3. The results of tests and examinations are contained in the following test reports:**

C.I.M.A.C.	RP 20104739	dated 4 <sup>th</sup>	October	2010
C.I.M.A.C.	RP 20104740	dated 4 <sup>th</sup>	October	2010

**4. Requirements of the personal protective equipment:**

The clog art. "F-S.FU" complies with:

the basic requirements for safety footwear specified in table 2 of EN ISO 20347:2004+A1:2007 standard;

the additional requirements for special applications specified in table 12 of EN ISO 20347:2004+A1:2007 standard:

- heel area opened;
- energy absorption of seat region (E);
- non-cleated outsole.

The shoe complies with what prescribed by EN ISO 20347:2004/A1:2007 standard concerning the slip-resistance of the outsole, "SRA" requirement.

The leather and/or textile components of the footwear comply with what prescribed by the Regulation 1907/2006/CE Annex XVII relating to restrictions on the marketing and use of certain dangerous substances and preparations (azocolourants).

The metallic components coming into direct and prolonged contact with the foot comply with what prescribed by the Regulation 1907/2006/CE Annex XVII relating to the release of nickel.



## 5. Marking of the personal protective equipment:

The following information is provided on the footwear sole:

- the "CE" mark
- manufacturer's type designation: F-S.FU
- the number and year of the reference European standard: EN ISO 20347:2007 (see notes)
- the symbols appropriate to the protection provided: OB-E-SRA (see notes)
- size.

On the inner side of the footwear is provided:

- date of manufacture (quarter and year).

On the upper is provided:

- manufacturer's identification mark: "BALDO".

## 6. Notes:

- The manufacturer is the one assuming the responsibility of design and fabrication of a product included in the Directive, in order to throw it in the market.
- The marking for the number and year of the reference European standard and the symbols appropriate to the protection provided should be adjacent to one another.
- This EC Type-Examination Certificate must be kept by the manufacturer, in order to produce it, on request, for the control body or safety control administration.
- The content of this EC Type-Examination Certificate is referred to the tested personal protective equipment only.
- This EC Type-Examination Certificate may be integrally duplicated; the copy must be faithful, legible (if pint size) and must contain the bold caption "TRUE COPY".
- The manufacturer should inform ANCI Servizi srl – Sezione CIMAC for any modification to the product, to the place/process of manufacturing and, if relevant (III category PPE), to the quality system if this compromises the conformity of the product to the essential requirements or other provisions of the Directive 89/686/EEC.
- The manufacturer should report all the complaints relating to the conformity of the certified product to the requirements of the reference harmonized standards and supply these reports on request of ANCI Servizi srl – Sezione CIMAC.
- The manufacturer should implement appropriate corrective actions when nonconforming product to the essential requirements of the EC certification are identified.